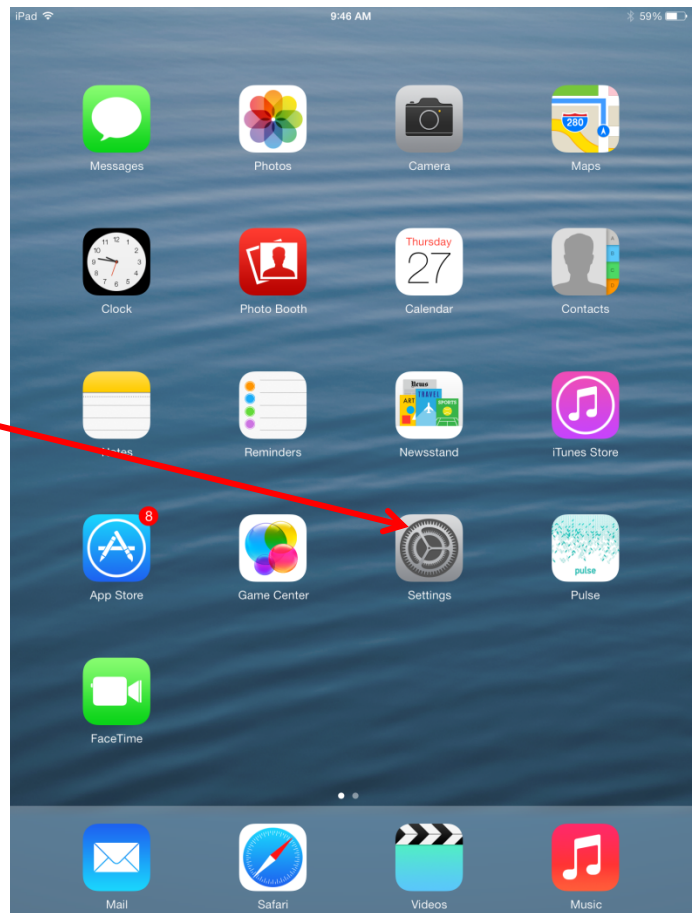


Connecting a 2D Scanner

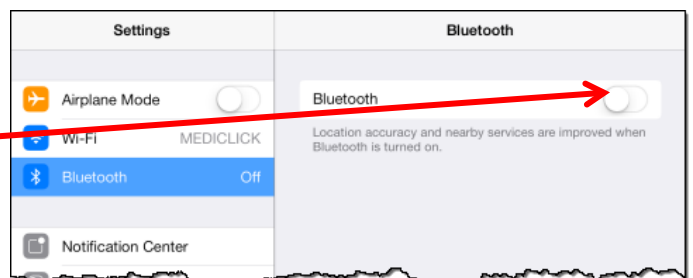
Note: If you have previously connected the CHS and are having trouble reconnecting, follow the steps under [Disconnecting the CHS from the iPad](#) to disconnect before continuing.

Turn the Bluetooth off.

1 On the iPad home screen,
TAP SETTINGS.



2 Toggle the **BLUETOOTH**
BUTTON OFF.



Scan device information.



3

TURN THE SCANNER ON .

Press and hold the button until you hear beeps and see the blue light flashing.

4

SCAN THE BARCODE

directly from this screen.

After a successful scan, you will hear a series of beeps and **the scanner will power down.**

**If the scanner will not scan from this screen, print out and scan the barcodes.*



Factory Reset

5

TURN THE SCANNER BACK ON.

6

SCAN THE BARCODE

directly from this screen.

Once it is scanned, you will hear 3 beeps. The blue light will remain flashing.

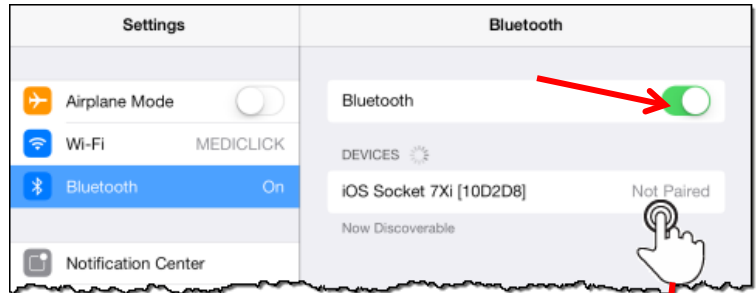


iOS Mode

Pair with the iPad.

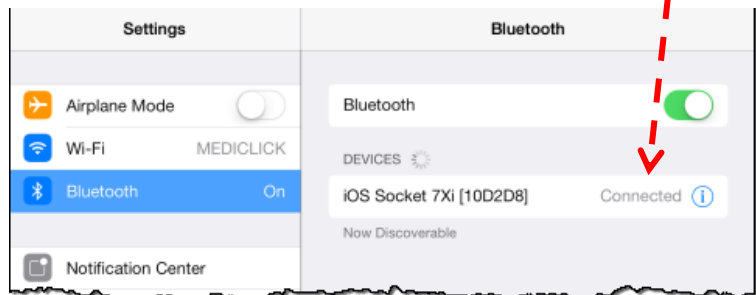
7

**TURN ON THE
BLUETOOTH**
on the iPad.

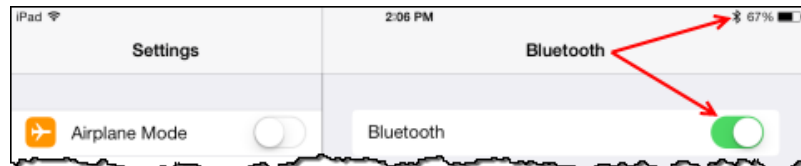


8

TAP the **NOT PAIRED**
message. The iPad will connect to
the CHS and the
message will change to
CONNECTED.



Your Socket CHS Bluetooth device is ready to use with Pulse
as indicated by the Bluetooth symbol in the status bar.

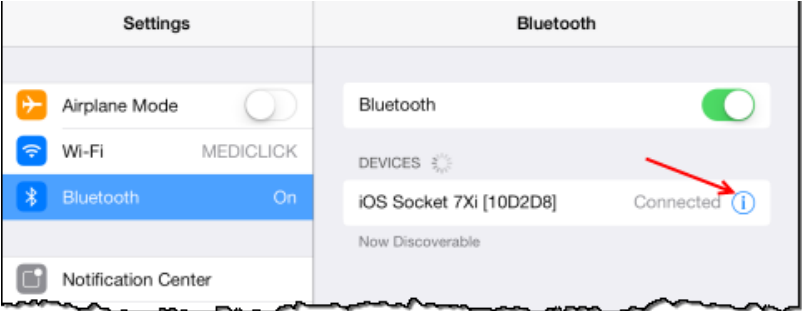


Note: It is not necessary to disconnect the CHS when not in use. The CHS device will automatically power off after two minutes. It will automatically reconnect when powered on, provided Bluetooth is turned on.

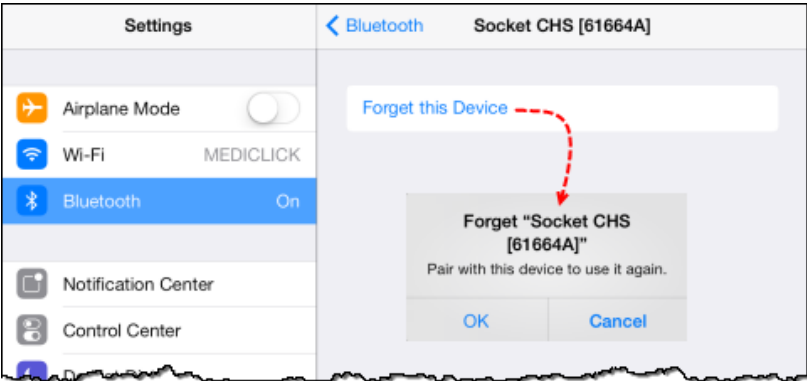
Disconnecting from the iPad

Turn the scanner off.

Go to iPad Settings.
With the Bluetooth turned On,
TAP THE BLUE .



TAP Forget this Device.
TAP OK.



The scanner is no longer connected with this iPad. Follow the steps at the top of this document to [reconnect](#).